



2023

BY THE NUMBERS - REPORT
FOR VETERINARY SCHOOLS

SETTING A HIGHER STANDARD TOGETHER®

Letter from the Chair and CEO



As we share our 2023 By The Numbers report, it's almost overwhelming to think of all the events that have transpired since COVID-19 began in late 2019 and early 2020. Continued expansion of NAVLE testing windows, remote proctoring options for the VEA, and an increasing number of candidates in both exam programs have brought us to a very different place from where we were just a short time ago. Our veterinary community has stepped up to the plate and delivered again and again as circumstances have changed and "new normals" came and went.

We're so grateful to everyone who has been a part of this journey — our fantastic volunteers, our dedicated staff, and our outstanding partners in academia. Through these rapidly-evolving times, the strength and commitment of the veterinary community show a resolve and a spirit that bodes well for our shared future.

ICVA continues forward, striving to be the world leader in veterinary assessment and continuing to provide world-class examinations and other assessment tools to protect the public, and animal health and welfare.




Kathy Bowler,
ICVA Chair


Heather Case,
DVM, MPH, DACVPM, CAE
Chief Executive Officer

ICVA Vision

The world leader in veterinary assessments.

ICVA Mission

Provide world-class examinations and other assessment tools to protect the public, and animal health and welfare.
Provide leadership and facilitate collaboration throughout veterinary medicine.

Values

Transparency

organizationally and in testing procedures, materials and content

Confidentiality

when collecting and reporting personal information, credit card data, and test scores

Reliability

in relevant test design, implementation, and scoring

Service

to candidates, licensing boards, and society at large

Respect, Civility & Collegiality

towards staff, stakeholders, board members, and across veterinary medicine

Integrity

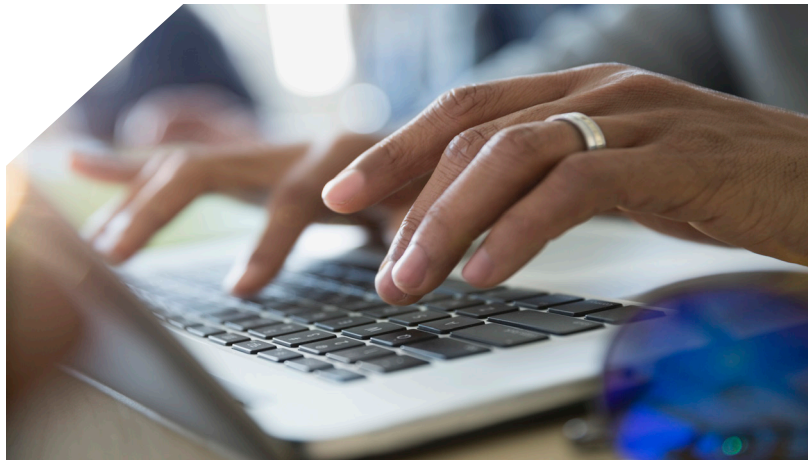
in all actions and business relationships

Fiscal Responsibility

to ensure continuous improvements in our testing products and customer service, as well as a viable future for our organization

Diversity and Inclusion

treat everyone with fairness, respect and dignity, and purposefully act to attract and retain staff and Board members with a broad range of ideas, viewpoints, perspectives, expertise and experiences reflecting the diversity of the populations we serve. We respect and value these differences and encourage opportunities to learn from and be enriched by them as they challenge us to grow and think differently



North American Veterinary Licensing Examination (NAVLE®)

Administered since 2000, the NAVLE consists of 360 clinically relevant multiple-choice questions and is a requirement for licensure to practice veterinary medicine in all licensing jurisdictions in the U.S. and Canada.

Cumulative Exam Completions by Candidates

7,019

candidates for 2021-2022

116,377

total candidates have taken
the exam to date

25.6%

increase in candidates in the
past 5 years

Standard Setting

The ICVA follows best practices in determining the passing standard for the NAVLE. Every three to five years, the ICVA reviews the standard for minimum knowledge required to pass NAVLE. The previous standard setting exercise occurred in 2019. Periodic review of the NAVLE passing standard ensures that the veterinary knowledge of those who pass the examination reflects current knowledge required for licensure.

ICVA conducted its most recent standard setting exercise during the summer and fall of 2022. As with the prior standard setting, the exercise consisted of three separate panels of veterinary subject matter experts. Veterinarians on the standard-setting panels were selected to ensure broad representation of the profession with respect to species and geographic location, and to ensure representation from clinical practice, colleges of veterinary medicine, and state and provincial licensing boards.

Results from the three activities were summarized and reviewed by the executive committee of the ICVA. The minimum passing standard was approved by the ICVA and was applied to the November-December 2022 NAVLE.

Ultimate Performance Passing Rate

for senior students from AVMA-accredited schools

2020-2021 - 92%

2021-2022 - 90%

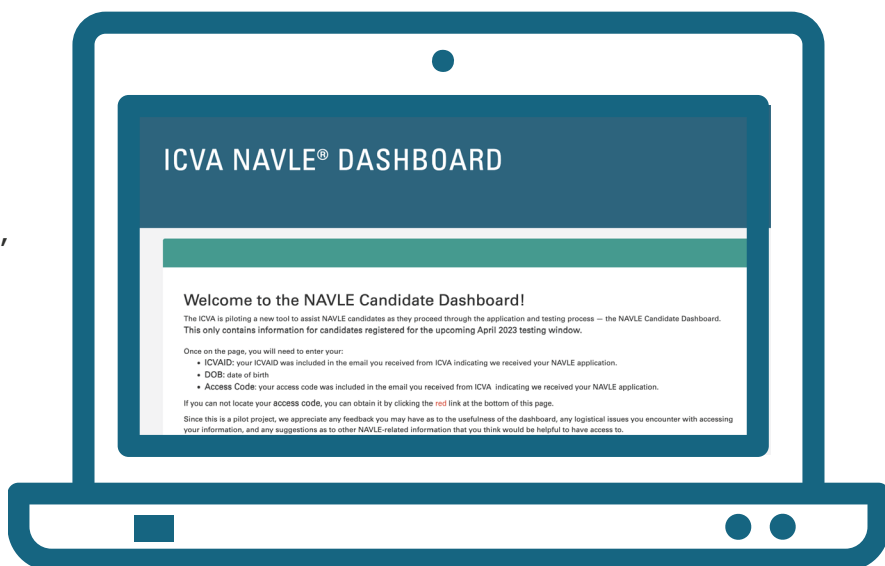


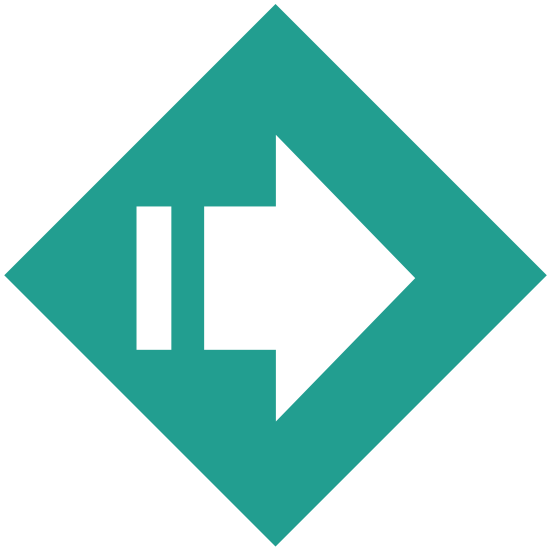
NAVLE Fees

The ICVA NAVLE fee for the upcoming 2023-2024 testing cycle is \$740, in U.S. funds. For those who want to take the NAVLE at selected Prometric Testing Centers outside of the U.S. or Canada, there is an additional \$355 fee for international testing. State/territorial board NAVLE fees will vary.

NAVLE Candidate Dashboard

Beginning in December 2022, NAVLE candidates have a new place to check on their NAVLE application and testing status. Starting with the April 2023 applications, the ICVA began piloting an on-line dashboard, where individual candidates are able to review their progress through the system from the point their application is downloaded into the ICVA database to the time they receive their passing NAVLE score and move into the veterinary licensure process.





The Next Phase – beyond COVID

While the ongoing COVID-19 pandemic continued to have some impact on the Spring and Fall 2022 NAVLE administrations, it caused minimal issues compared to the previous two years.

Through this time, our commitment to having candidates test safely and receive score reports in a timely manner to proceed with licensing, while maintaining the high standards of the NAVLE itself, remains a top priority.

Going forward, ICVA is assessing how all aspects of the NAVLE process (from application through score reporting) can be revised to meet the changing needs of those involved.

KEY CHANGES:

Extended Exam Windows for Candidates

Prior to the Covid-19 pandemic, the NAVLE was offered twice a year – during a four-week window in November-December, and again during a two-week window in April. This provided most candidates two opportunities to pass the NAVLE before graduating from veterinary school.

At the request of Prometric, ICVA proactively gave all 2022 Spring and Fall NAVLE candidates an expanded timeframe to complete the exam. The Spring NAVLE testing window ran from March 14 – April 30, 2022, and the Fall 2022 NAVLE window allowed for testing from November 1 - December 16, 2022. This was done to allow for additional scheduling capacity to serve the increasing number of NAVLE candidates.

Moving into 2023 and beyond, NAVLE testing windows will likely continue to be longer than they were before 2020, due to larger numbers of NAVLE candidates and limited capacity at Prometric Testing Centers. The increase involves several factors, including increasing numbers of AVMA-accredited schools, larger class sizes at AVMA-accredited schools, and increasing numbers of candidates from the ECFVG and PAVE educational equivalency programs.



Early Application and Advance Scheduling

Candidates for the Spring and Fall 2022 NAVLE testing windows were encouraged to apply early. In order to ease scheduling, candidates also received access to their scheduling and admission e-permits online earlier, allowing them to make their testing appointments with Prometric as soon as the permits were ready. This practice will continue for the foreseeable future.



NAVLE Self-Assessments

NAVLE practice exams (also known as NAVLE Self-Assessments) are web-based examinations designed to help NAVLE candidates identify their strengths and weaknesses as they prepare for the NAVLE. Each self-assessment form consists of 200 retired NAVLE items, which are presented in four sections of 50 items each. All NAVLE Self-Assessments follow the current blueprint of the NAVLE.

Each 200-item assessment costs \$50, with multiple English and French versions offered. Additionally, at a cost of \$65 per form, there is one form in each language with expanded feedback that includes correct answers to individual questions that were answered incorrectly.

There are 2 types of self-assessments: Regular and Expanded Feedback

English

Form 1 - Regular
Form 2 - Expanded
Feedback
Form 3 - Regular

French

Form 1 - Regular
Form 2 - Expanded
Feedback

\$50

Regular
Self-Assessment Fee

\$65

Expanded Feedback
Self-Assessment Fee

A score report is available immediately after completing a self-assessment, showing the strengths and weaknesses in performance for each of the main topic areas. The report also indicates the performance of a comparison group of candidates on the same items. The score report includes a projected NAVLE score range based on the participant's performance on the assessment.

The expanded feedback form allows the examinee to review the questions and answers to incorrectly answered questions.

Research has confirmed that the projected score range for examinees who take the practice exams under the standard-paced timing mode is predictive of later performance on the NAVLE.

Veterinary Educational Assessment (VEA)

The VEA offers veterinary schools a comprehensive, standardized, independent assessment of knowledge in basic veterinary medical sciences. It allows schools to track the performance of their students in the below content areas over time, and to compare the performance of their students to that of students from other veterinary schools.

The VEA is a 240-item web-based standardized examination covering five content areas:

Anatomy

Physiology

Pharmacology

Microbiology

Pathology

2021-2022 Testing Cycle

1,745

students took the VEA over three testing windows at 14 schools, with either in-person or remote testing



6.8%

increase over 2019-2020 testing cycle

51.1%

increase over the last five years

VEA Exam Fee

The ICVA charges a per-candidate fee of \$75, payable by the school beginning with the September 2022 administration. The increase of \$15 was due to administrative costs and was the first fee increase since 2015.

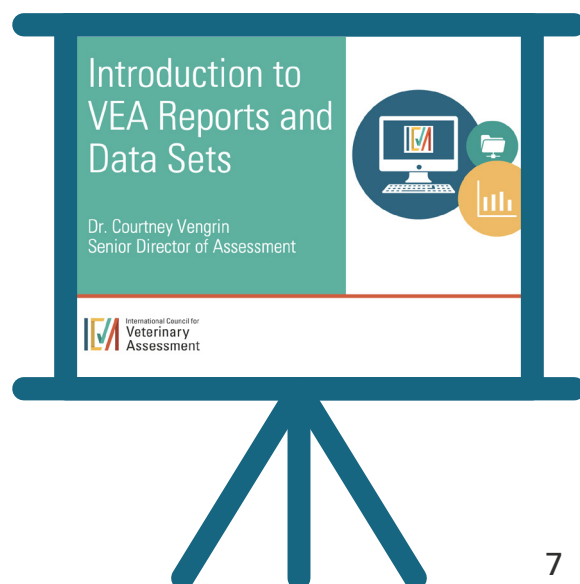
VEA Proctoring Options

VEA remote proctoring started in May 2020 to allow for more accessible testing during the pandemic. ICVA continues to offer this as a regular feature.

VEA Workshops

ICVA now offers VEA workshops for participating institutions. These workshops were developed to further support schools using VEA to measure student knowledge in the veterinary basic sciences. The workshops underwent pilot testing in the spring of 2022 and ICVA thanks the University of Tennessee, Auburn University, and Texas A&M University for their participation in the pilot program.

The Spring 2023 workshop is focused on the background of the VEA and increasing knowledge for faculty and staff new to utilizing the VEA and working with the associated data. Invitations to participate will be sent via email.





Academic Veterinary Assessment Committee

The Academic Veterinary Assessment Committee (AVAC) is charged by the ICVA BOD with identifying what assessments and measurement resources currently exist across academia, and where ICVA could best serve the assessment needs of academic veterinary medicine. Current initiatives include overseeing ICVA's Assessment Grant Program, promoting Assessment Development Workshops, and developing and updating the Assessment Tools and Resources page on ICVA's website.

Currently, there are nine members of the AVAC and five ICVA staff providing support.

AVAC Committee Members 2022-2023

Elizabeth Armitage-Chan, MA, VetMB, PhD, ACVAA, FHEA, MRCVS, University of London-RVC, London, UK

Kristin Chaney, DVM, ACVIM (LIAM), ACVECC, Texas A&M University-CVM, College Station, TX

Pedro Diniz, DVM, PhD, Western University-CVM, Pomona, CA

Tamara Hancock, DVM, MS, DACVP, PhD, University of Missouri-CVM, Columbia, MO

Kathryn Michel, DVM, MS, MSED, DACVN, University of Pennsylvania-CVM, Philadelphia, PA

Liz Norman, BVSc, MVM, EdD, MANZCVS, Massey University, CS, Palmerston North, NZ

Emma O'Neill, BSc, BVSC, PhD, DSAM ECVIP-CA, PGDip, University College of Dublin-CVM, Dublin, IE

Malathi Raghavan, DVM, MS, PhD, Purdue University-CVM, West Lafayette, IN

Fern Tablin, VMD, PhD, Board Liason, University of California, Davis, CA

Staff Support

Jeanne Blasewitz

Heather Case, DVM, MPH, DACVPM, CAE, ICVA CEO

Janine Hawley MS, ICE-CCP

Kent Hecker, PhD

Elizabeth Johnson Million, DVM

Courtney Vengrin, MS, PhD

Assessment Tools and Resources

With the move to remote exams and the emphasis on online learning, ICVA's Academic Veterinary Assessment Committee curated a list of veterinary assessment resources.

The resource list is updated regularly as more resources are made available online: <https://www.icva.net/resources/assessment-resources/>

If you have questions or suggestions for resources for the list, please send your requests to mail@icva.net.



NAVLE School Statistical Report Update Process

The AVAC will begin a process to revise and update the NAVLE School Statistical Reports later this year. Dr. Courtney Vengrin, Senior Director of Assessment at ICVA, is leading the project and will support the AVAC in utilizing the Delphi method to revise and update the NAVLE statistical reports. This method offers a systematic approach to identifying factors to be addressed and prioritizing these based on an expert panel consensus. One of the key benefits of the Delphi method is that it allows for input from a broad group of stakeholders, giving all schools the opportunity to provide input in the process in a formalized and efficient manner.

Workshops Available from ICVA

ICVA offers a variety of Assessment Workshops grounded in educational literature and best practices in the field. These interactive workshops are created and customized for each veterinary school to assist with expanding methods for assessing veterinary student performance and determining best practices specific to their institution's students, faculty, and administration. Currently, Drs. Kent Hecker, Elizabeth Johnson Million, Courtney Vengrin and Ms. Janine Hawley provide Assessment Workshops in both virtual and in-person formats. The workshop team is currently scheduling dates for the summer of 2023.

Faculty or administrators interested in The ICVA Assessment Workshops should contact [Dr. Vengrin](#).



Presentations Available from ICVA

SO, YOU WANT TO PASS THE NAVLE? PRESENTATION

ICVA Assistant Director of Outreach and Engagement Dr. Elizabeth Johnson Million has recently developed a new presentation for veterinary students and others planning to take the NAVLE. *So, You Want to Pass the NAVLE? Why the Test Matters and How to Prepare* highlights basic information about ICVA and the NAVLE, including an overview of the NAVLE blueprint, application timeline, scoring, and how to approach NAVLE questions. Dr. Million also discusses the best resources for NAVLE preparation.

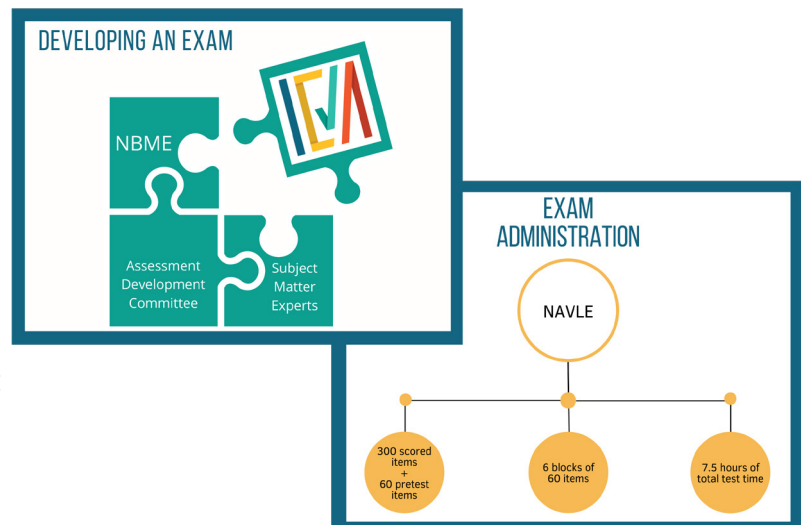


NAVLE DEEP DIVE PRESENTATION

Each year, ICVA staff presents the *NAVLE Deep Dive* presentation at the American Association of Veterinary State Boards (AAVSB) annual meeting and conference. This presentation provides an in-depth perspective on high-stakes exam development and creation, as well as the psychometric standards and processes for the NAVLE.

THE LIFE OF AN ITEM PRESENTATION

The Life of an Item is a presentation created for stakeholder groups to demystify the NAVLE®. It provides an overview of the International Council for Veterinary Assessment, the creation of NAVLE items and test administration. ICVA provides all of these presentations at no cost to veterinary stakeholder groups. Groups interested in any of the above presentations should contact Dr. Million.





On The Horizon

Assessment of Longitudinal Learning in Veterinary Education (ALIVE progress test)

A progress test is typically a low stakes assessment blueprinted to a competency profile or set of program outcomes. As a general practice, students are administered a progress test (usually multiple-choice questions) several times over the course of their program and typically once a year. The intent is to use the progress test as an assessment for learning to provide feedback to several stakeholder groups. Test data may be delivered to students regarding their performance by competency,

species, organ system, and year of study; to instructors regarding student performance on content related to their respective courses; and to administrators regarding student progression on topic areas as they proceed through a curricula. The first meeting of the ICVA ALIVE progress test Blueprint Advisory Committee focused on creating a draft blueprint for the test, was held February 27-28.



Moving Forward with Our Commitment to Diversity and Inclusion

In 2022, ICVA's Diversity, Equity, Inclusion, and Privilege (DEI-P) Task Force was created to assist with diversity, equity, and inclusion efforts in the work of the Board and the organization as a whole. After a competitive Request For Proposal process, ReadySet was selected as the consulting group to assist ICVA with DEI-P strategic priorities. The first meeting with the ICVA DEI-P Task Force and the ReadySet leadership team was held in February of 2023. Over the next year, plans are for ReadySet to begin work by conducting an organizational assessment to understand ICVA's current state and utilize this information to develop a DEI-P training plan, assist ICVA in standing up the DEI-P Task Force, and deliver a comprehensive DEI strategic plan and roadmap.



International Council for
Veterinary Assessment