

SETTING A HIGHER STANDARD TOGETHER®

**2022**  
ANNUAL REPORT  
FOR LICENSING  
BOARDS

**NAVLE®**  
NAVLE SELF-ASSESSMENT  
**SPECIES SPECIFIC EXAMS**




## Letter from the Chair and CEO

We're pleased to share that **testing has been a success** during these ongoing unprecedented times, maintaining the world-class standards of our examination process while seeing growth in the number of candidates taking our examinations around the globe.

**7,019 candidates** took the North American Veterinary Licensing Examination® (NAVLE®) during the 2021-2022 testing cycle, showing a **5.7% increase** from the 6,639 candidates who tested during the 2020-2021 cycle.

We at ICVA recognize the need to continue investing in innovation and our commitment and vision to being a world leader in veterinary assessments. Over the past few years, we have begun to build our **in-house assessment capabilities** by adding a Chief Assessment Officer and a Senior Director of Assessment, and in 2022 we added a Chief Innovation Officer to our growing team. Another exciting update is that we've established a Communications Skills Assessment Task Force, which is currently performing a systematic review to gather evidence regarding communication skills assessment methods that could be used in different testing environments.

It's been an eventful year at ICVA, and we're grateful for the outstanding volunteers, hardworking staff, regulatory and academic colleagues, and candidates dedicated to helping fulfill our mission to provide world-class assessments that protect animals and humans alike.



**Kathy Bowler, Public Member,**  
designated by the AAVSB  
ICVA Chair



**Heather Case, DVM, MPH,**  
**DACVPM, CAE**  
Chief Executive Officer



Kathy Bowler



Dr. Heather Case

## VISION | MISSION | VALUES

### Vision

The world leader in veterinary assessments.

### Mission

Provide world-class examinations and other assessment tools to protect the public, and animal health and welfare. Provide leadership and facilitate collaboration throughout veterinary medicine.

### Values

**Transparency**  
organizationally and in testing procedures, materials and content

**Confidentiality**  
when collecting and reporting personal information, credit card data, and test scores

**Reliability**  
in relevant test design, implementation, and scoring

**Service**  
to candidates, licensing boards, and society at large

**Respect, Civility & Collegiality**  
towards staff, stakeholders, board members, and across veterinary medicine

**Integrity**  
in all actions and business relationships



### Fiscal Responsibility

to ensure continuous improvements in our testing products and customer service, as well as a viable future for our organization

### Diversity and Inclusion

treat everyone with fairness, respect and dignity, and purposefully act to attract and retain staff and Board members with a broad range of ideas, viewpoints, perspectives, expertise and experiences reflecting the diversity of the populations we serve. We respect and value these differences and encourage opportunities to learn from and be enriched by them as they challenge us to grow and think differently.

## North American Veterinary Licensing Examination (NAVLE)

The NAVLE has been administered since 2000 and consists of **360 clinically relevant multiple-choice questions** (300 scored, 60 pre-test) and is a requirement for licensure to practice veterinary medicine in all licensing jurisdictions in the U.S. and Canada.

The NAVLE was developed in cooperation with the National Board of Medical Examiners® (NBME®) and offered at Prometric computer testing centers throughout North America and certain international sites.



## COVID-19 RESPONSE

As COVID-19 policies and guidelines were released and continued to rapidly evolve, the ICVA worked hand-in-hand with the National Board of Medical Examiners® (NBME®) and Prometric Testing Centers to make informed decisions regarding testing.

## CUMULATIVE EXAM COMPLETIONS BY CANDIDATES:

2021-2022 TESTING CYCLE

7,019

## Expanded Exam Completion Options for Candidates

The **NAVLE is typically offered twice a year**—during a four-week window in November-December and again during a two-week window in April. This provides most candidates two opportunities to pass the NAVLE before graduating from veterinary school.

Due to the ongoing pandemic, our **Fall 2021 NAVLE window was expanded to two months**, spanning from November 1 - December 31, and our **Spring 2022 NAVLE window was expanded to seven weeks**, from March 14 - April 30.

## Prometric Testing Center Access

For the 2021-2022 testing windows, there were minimal instances of Prometric sites being closed or having limited capacity. Most of the COVID-related scheduling issues were with individual candidates who were either sick or quarantined due to close contacts. The expanded testing windows allowed the majority of those candidates to reschedule without further issues.

## NAVLE Fees

The 2021-2022 ICVA NAVLE application fee was \$705 (USD) for candidates to take the test. For those who wanted to take the NAVLE at selected Prometric Testing Centers outside of the U.S. or Canada, there was an additional \$340 (USD) international testing fee.



## Performance Data

Complete data can be found on the ICVA website by clicking on the heading "How have others done on the NAVLE": <https://www.icva.net/faqs/>

## BY THE NUMBERS

**89,362**

candidates completed the NAVLE since 2000-2001

**110,502**

total tests given since 2000-2001

**25.6%** ↑

increase in candidate pool in the last five years

## ULTIMATE PERFORMANCE PASSING RATE for senior students from AVMA-accredited schools

**% passing the exam**

remains relatively consistent for the past five years and we continue to monitor the data as part of our ongoing quality control measures. This includes monitoring the differences in ultimate performance passing rate variance during the COVID-19 pandemic, which is not yet attributable to any single source or cause.

**90%** 2021-2022

**92%** 2020-2021

**95%** 2019-2020

**94%** 2018-2019

## Performance on Fall 2021 NAVLE by Examinee Group

	Mean Scale Score	SD Scale Score	Number of Examinees Failing	Percent of Examinees Failing	Total Examinees
Criterion Group <sup>1</sup>	493	68	646	15.2%	4244
Non-Criterion Group <sup>2</sup>	441	65	248	38.2%	650
Non-Accredited Group <sup>3</sup>	399	72	290	65.2%	445
<b>Total Group</b>	<b>479</b>	<b>74</b>	<b>1184</b>	<b>22.2%</b>	<b>5339</b>

## Performance on Spring 2022 NAVLE by Examinee Group

	Mean Scale Score	SD Scale Score	Number of Examinees Failing	Percent of Examinees Failing	Total Examinees
Criterion Group <sup>1</sup>	453	69	83	30.7%	270
Non-Criterion Group <sup>2</sup>	427	51	429	45.7%	939
Non-Accredited Group <sup>3</sup>	404	66	296	62.8%	471
<b>Total Group</b>	<b>425</b>	<b>61</b>	<b>808</b>	<b>48.1%</b>	<b>1680</b>

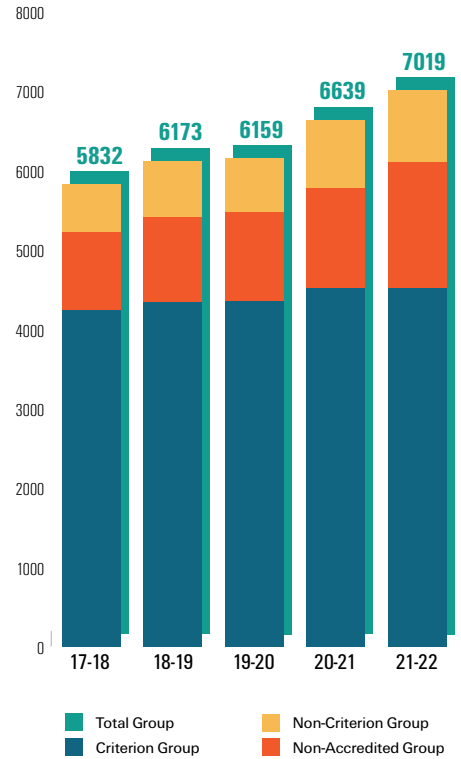
## Performance on Both Administrations by Examinee Group

	Mean Scale Score	SD Scale Score	Number of Examinees Failing	Percent of Examinees Failing	Total Examinees
Criterion Group <sup>1</sup>	490	68	729	16.1%	4514
Non-Criterion Group <sup>2</sup>	433	57	677	42.6%	1589
Non-Accredited Group <sup>3</sup>	401	69	586	64.0%	916
<b>Total Group</b>	<b>466</b>	<b>74</b>	<b>1992</b>	<b>28.4%</b>	<b>7019</b>

- (1) Criterion Group: senior students of accredited veterinary schools who took the NAVLE for the first time under standard testing conditions;
- (2) Non-Criterion Group: senior students of accredited veterinary schools who had previously taken the NAVLE or took the NAVLE with test accommodations or graduate veterinarians from accredited schools; and
- (3) Non-Accredited Group: graduates or senior students of foreign veterinary schools that are not accredited by the American Veterinary Medical Association's Council on Education.

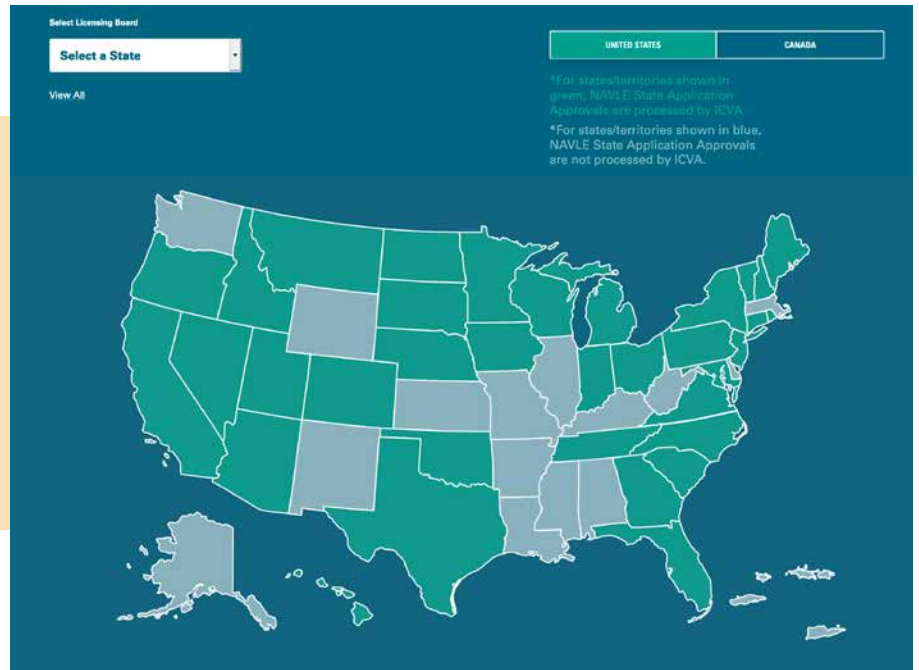
## NAVLE Growth

Breaking out the segments of Criterion, Non-Criterion, and Non-Accredited candidates helps show the trends over the past 5 years.



## NAVLE Approvals

The ICVA reviewed and approved NAVLE candidates on behalf of 36 licensing boards. This service allows licensing boards to focus resources on licensing priorities. Candidates pay an application fee to ICVA (\$55), and there is no cost to the licensing boards.





## NAVLE Self-Assessments

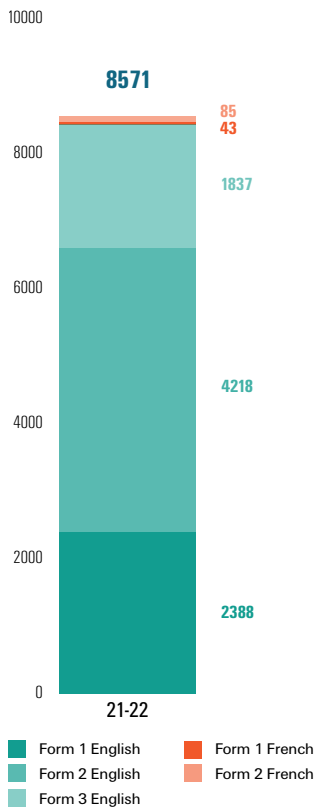
NAVLE Self-Assessments (practice assessments) are web-based examinations helping candidates identify their strengths and weaknesses as they prepare for the NAVLE.

Each NAVLE Self-Assessment form consists of **200 multiple-choice items**, presented in four sections of 50 items each. NAVLE Self-Assessment forms are available for purchase and can be taken under standard-paced or self-paced timing modes.

Research has shown that the projected score range for examinees who take the practice exams under the standard-paced timing mode is predictive of later performance on the NAVLE. Our **expanded feedback form** also allows the examinee to review the questions and answers to incorrectly-answered questions.



## NAVLE Self-Assessment Use



## BY THE NUMBERS

### 2021-2022 REGULAR & EXPANDED FEEDBACK USE

#### English

Form 1 – Regular	<b>2388</b>
Form 2 – Expanded Feedback	<b>4218</b>
Form 3 – Regular	<b>1837</b>

#### French

Form 1 – Regular	<b>43</b>
Form 2 - Expanded Feedback	<b>85</b>

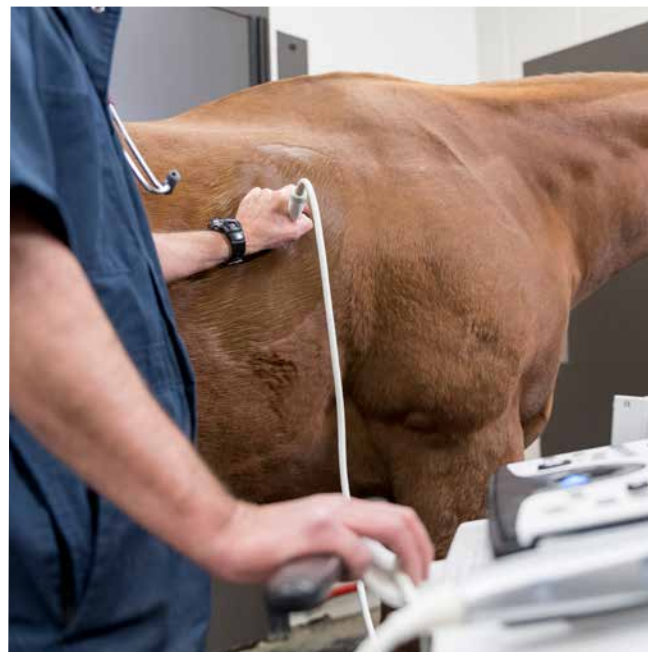
Regular  
Self-Assessment  
Fee: **\$50**

Expanded Feedback  
Self-Assessment  
Fee: **\$65**

## Species Specific Exams

In 2000, ICVA developed Species Specific examinations to **evaluate veterinarians' knowledge** of companion animal or equine medicine. Depending on the needs of the licensing board, veterinarians may take one or both of the examinations.

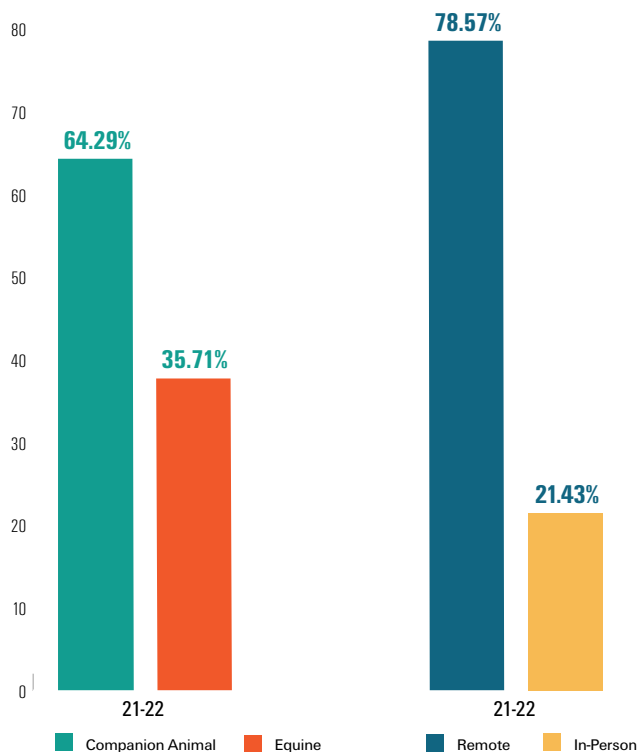
Exams can be used to assess a veterinarian's competency in disciplinary cases or to provide verification of competency for a veterinarian who is licensed in another jurisdiction.



The **100-item exam** is only available to licensing boards, each in multiple forms that come with an ICVA-recommended passing standard.

ICVA most recently updated the Species Specific examinations through a standard setting process in 2019, and implemented options in 2020 to allow **remote proctoring for easier administration**.

## Species Specific Examination Use



## Opportunities for ICVA Volunteers

Our **volunteer community** comprises licensing board members, academicians, current practitioners, and other subject matter experts in veterinary medicine. On-going volunteer opportunities that support our **commitment to providing quality assessments** include the following:

**NAVLE Item Writing:** Writing items for the NAVLE in accordance with the current NAVLE blueprint.

**Annual NAVLE Pool Reviews:** Older NAVLE items are reviewed for accuracy and relevance.

**Annual NAVLE Form Reviews:** NAVLE forms are reviewed prior to use in the next testing cycle.



If you are interested in learning more about volunteer opportunities with the ICVA, please contact our office at [mail@icva.net](mailto:mail@icva.net).

“

Volunteering with ICVA has been a very informative experience and I feel like I am a better educator of veterinary students because of it. I did not realize how much work went into making the examinations the best they can be, and I have a much greater appreciation for what is involved and the detailed statistics that go into creating questions. ”

Dr. Tamara Swor

“

Volunteering for the IVCA will allow you to share your area of expertise, meet wonderful, dedicated colleagues from across the many specialties of veterinary medicine from the United States and Canada while working towards the common goal of improving the assessments used in veterinary medicine. It is very rewarding to give back to our profession! ”

Dr. Teresa Morishita

“

Volunteering with ICVA is a wonderful opportunity to do something for our profession while at the same time allowing personal growth. ”

Dr. Kathryn Michel

**300+** volunteers

THANK YOU!